

# AVAILABLE STORAGE SUITE

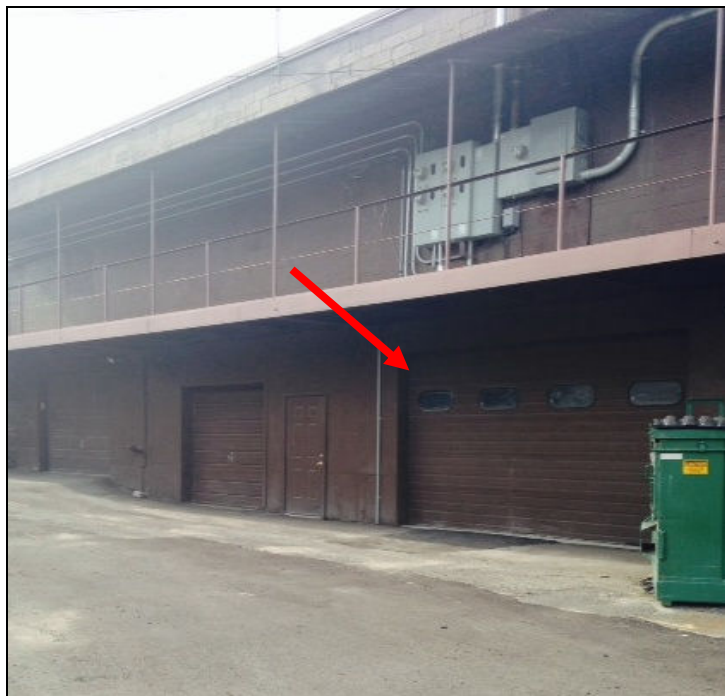
**3220 Watson Boulevard, Town of Union, NY**

(Located 1.5 miles from NYS Route 17 at Exit 69)

## **Salient Features:**

### **Call for Pricing**

- Approximately 2,350 square feet;
- 9' x 14' overhead door;
- Personnel door;
- 24/7 access to unit;
- Interior ceiling height is approximately 14' high;
- Just west of the Hooper Road intersection; and
- Additional access to storage garage from N. Brookside Avenue



**Figure 1 – Location of Unit**

***FISHS EDDY V, LLC  
101 KNIGHT ROAD, VESTAL, NY 13850  
JSMILLER@JSMILLERAPPRAISAL.COM  
PHONE 607.729.3690 / FAX 607.729.0823***



**Figure 2 – Aerial Photograph of Site (Source: bcgis.com)**