

# AVAILABLE STORAGE SUITE

## 3220 Watson Boulevard, Town of Union, NY

(Located 1.5 miles from NYS Route 17 at Exit 69)

### Salient Features:

Asking \$1,250/month including electric (no direct heat)

- *Available immediately;*
- Approximately 1,600 square feet;
- 14' x 10' overhead door;
- 24/7 access to unit;
- Interior ceiling height is approximately 10.5' high;
- Located just west of the Hooper Road intersection; and
- Additional direct access from North Brookside Avenue

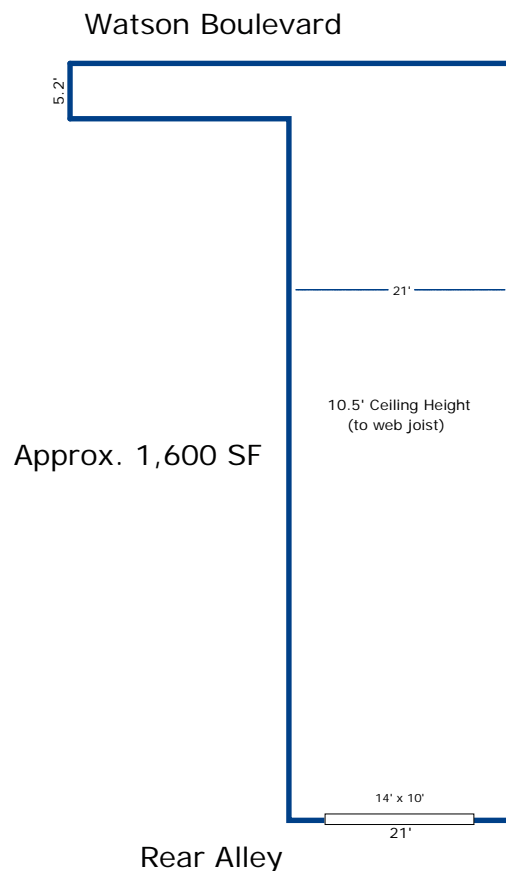


Figure 1 – Layout of the storage suite



365 HARRY L. DRIVE, JOHNSON CITY, NY 13790

PHONE 607.729.3690 / FAX 607.729.0823

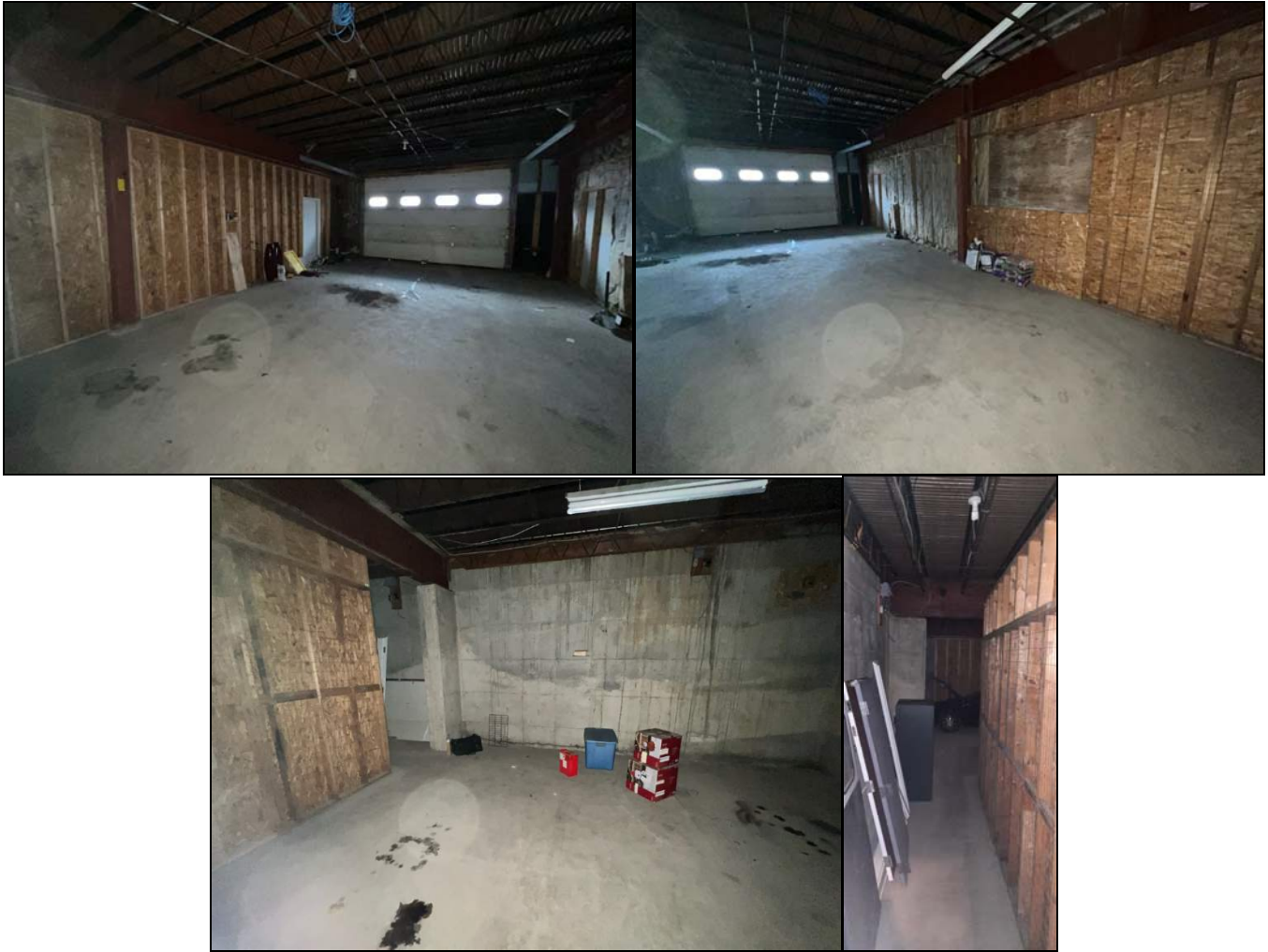
[JSMILLER@JSMILLERAPPRAISAL.COM](mailto:JSMILLER@JSMILLERAPPRAISAL.COM)



**Figure 2 – Aerial photograph of the site**



**Figure 3 – Location of the storage suite**



**Figure 4 – Interior of the storage suite**